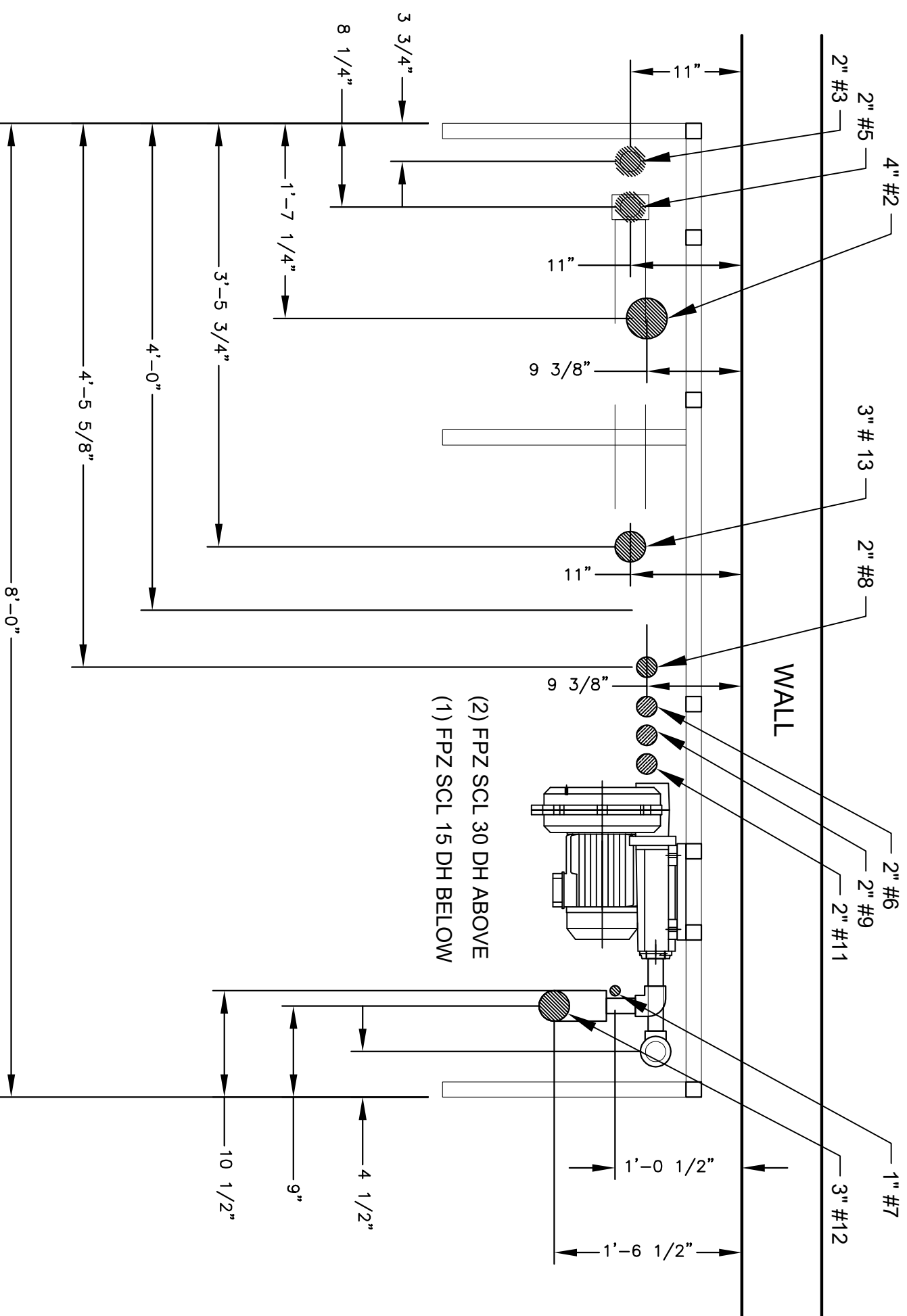
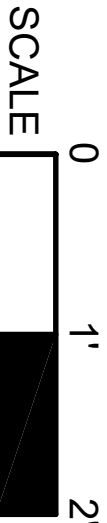


PIPE INFO	
1	6" PIPE FROM CAR WASH
2	4" PIPE CYCLONE RETURN
3	2" PIPE TO CYCLONES
4	6" PIPE TO SEWER
5	2" PIPE TO CYCLONES
6	2" ELECTRICAL CONDUIT
7	1" AIR PIPE
8	2" REPRESS PIPE
9	2" ELECTRICAL CONDUIT
10	2" PIPE TO SEWER
11	2" ELECTRICAL CONDUIT
12	3" AIR PIPE
13	3" WATER INPUT PIPE
14	2" RECIRCULATION PIPE
15	6" OVERFLOW PIPES



(2) FPZ SCL 30 DH ABOVE
(1) FPZ SCL 15 DH BELOW



PROPRIETARY AND CONFIDENTIAL
THE INFORMATION CONTAINED IN THIS DRAWING IS THE SOLE PROPERTY OF AQUA BIO Technologies. ANY REPRODUCTION IN PART OR AS A WHOLE WITHOUT THE WRITTEN PERMISSION OF AQUA BIO Technologies IS PROHIBITED.

UNLESS OTHERWISE SPECIFIED:	NAME	DATE
DIMENSIONS ARE IN INCHES	GM	3/26/2016
TOLERANCES:	CHECKED	
FRACTIONAL ±	APPROVED	
ANGULAR MATCH ± BEND ±	CAD DESIGN BY:	
TWO PLACE DECIMAL ±		
THREE PLACE DECIMAL ±		

AQUA BIO Technologies

TITLE:
Equipment Room Floor Plumbing Plan

OVERALL SPECS

SIZE	DWG. NO.	REV
B	ERFPP-001	
SCALE: 1/70	WEIGHT:	SHEET 1 OF 1

MATERIAL	
FINISH	
DO NOT SCALE DRAWING	

CADWORKSPRO
Chicago, IL
glim@cadworksprowork.com