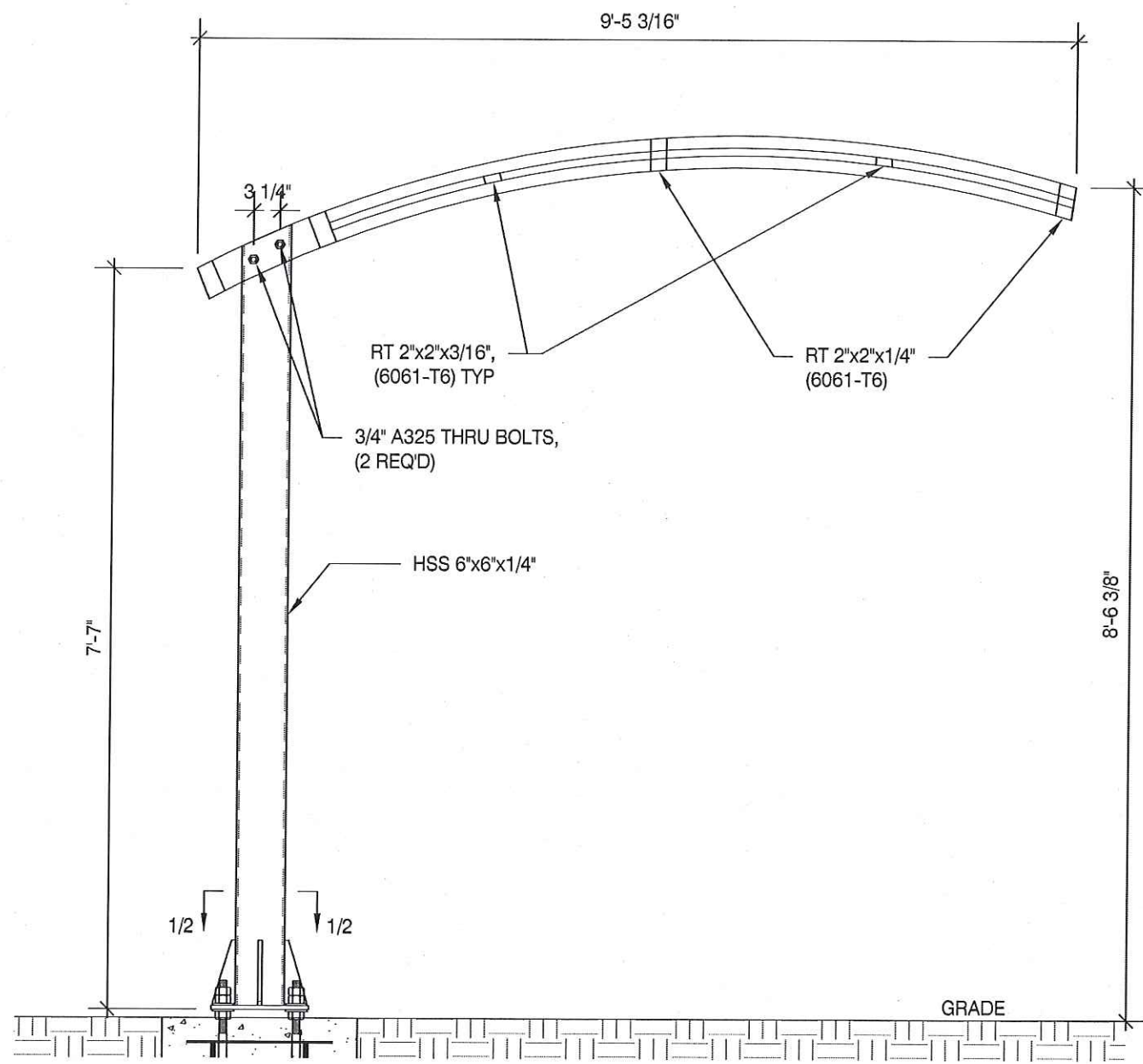


* NOTE: THIS FOOTING HAS BEEN DESIGNED ON THE ASSUMPTION THAT THE SOIL IS SUITABLE FOR BEARING AND IS NON-EXPANSIVE. OWNER TO VERIFY SOIL CONDITIONS PRIOR TO CONSTRUCTION.

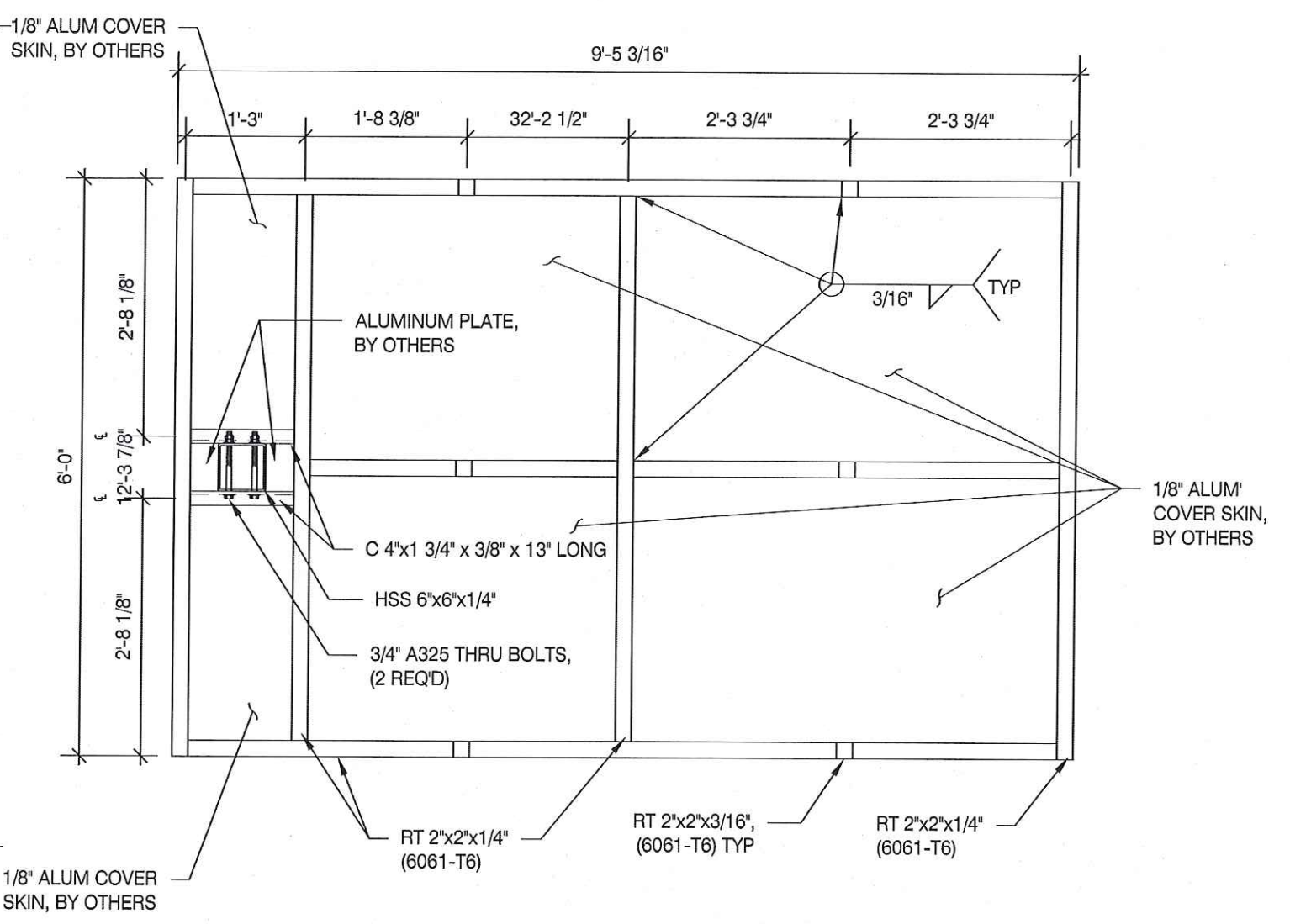
* CLIENT - DANIELS WHOLESAL
 * 2012 IBC
 * 140 MPH WIND SPEED, EXP. C
 * (1) POLE, (1) FOOTING

NOTES
 1.) SEE MANUFACTURERS DRAWINGS FOR ADDITIONAL DETAILS AND DIMENSIONS.
 2.) SIGN CABINET AND CONNECTION BY DANIELS WHOLESAL.



FRONT ELEVATION
 SCALE: N.T.S.

1



PLAN VIEW
 SCALE: N.T.S.

2

MBI
 michael brady inc.
 sign engineering
 structural engineering

KNOXVILLE OFFICE
 299 WEISGARBER RD.
 KNOXVILLE, TENNESSEE
 37919
 PHONE 865-584-0999
 FAX 865-584-5213

PROJECT:
 1002 Washington St. Houston TX

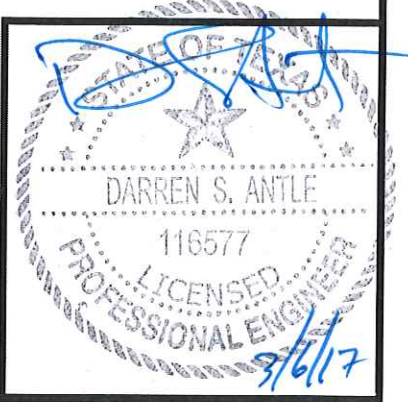
DRAWING TITLE:
Single Post Canopy

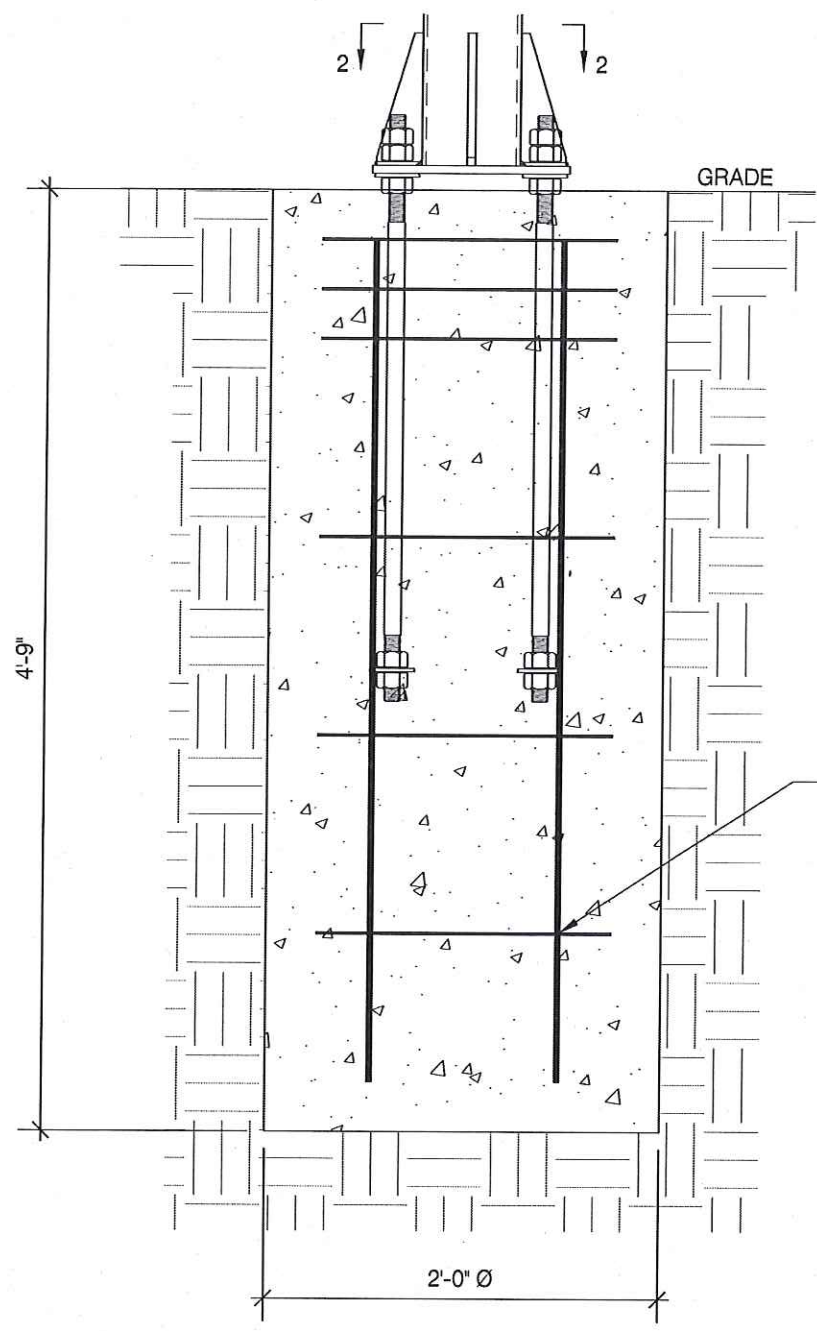
DRAWN BY: JAM
 CHECKED BY: DSA
 COMM. NO. 170235.01

FIRM #-15323

DATE:	03/06/17	
REV. #	DATE	DRAWN BY

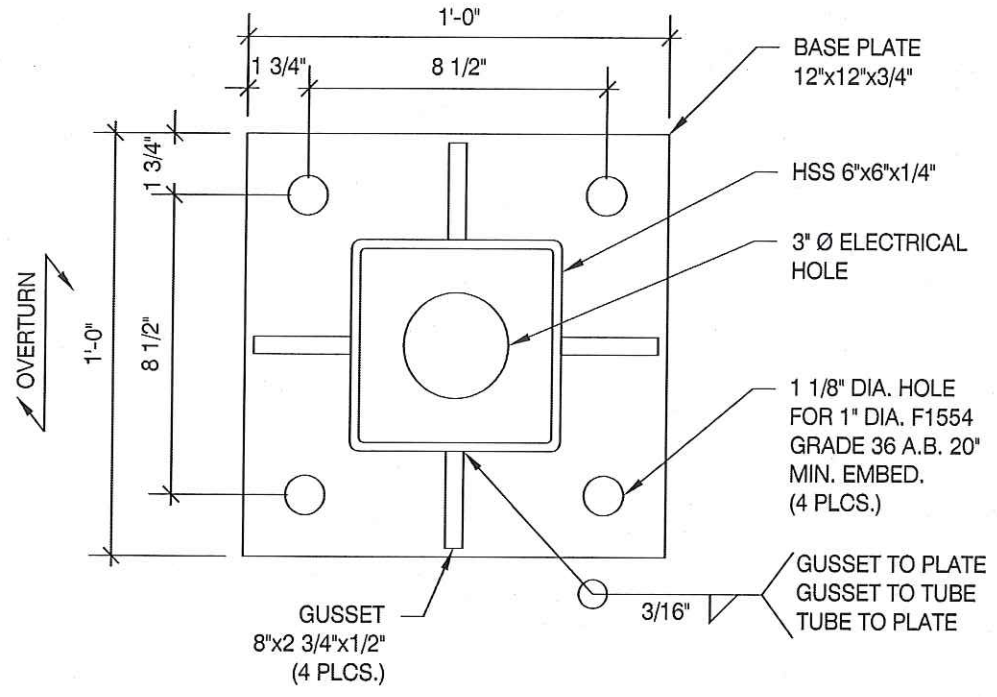
DRAWING NO.
 DWG.
1



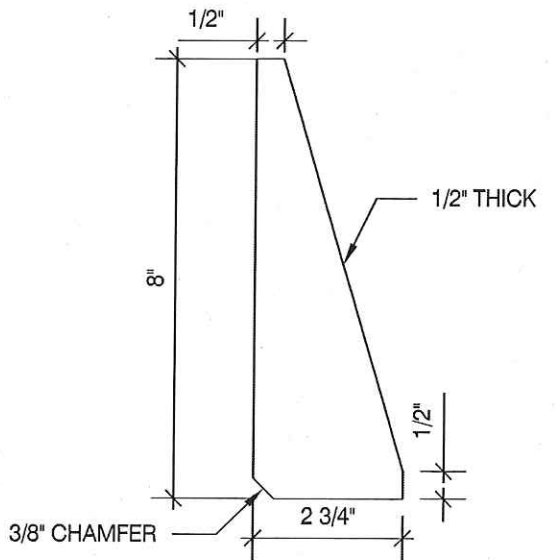


CAISSON FOUNDATION DETAIL
SCALE: N.T.S. (1)

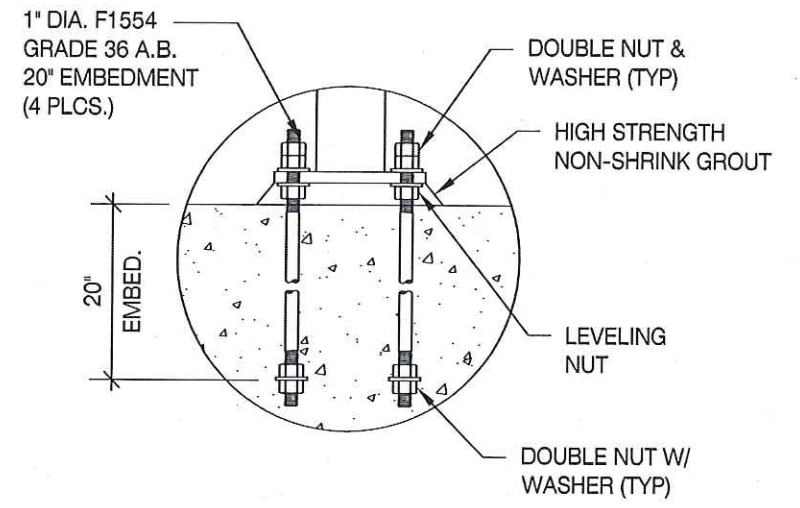
(4) #5 VERT W. #3 TIES @ 12 IN O.C. AND (3) @3 IN O.C. TOP



BASE PLATE
SCALE: N.T.S. (2)



TYP GUSSET DETAIL
SCALE: N.T.S. (3)



ANCHOR BOLT DETAIL
SCALE: N.T.S. (4)

NOTES
1.) SEE MANUFACTURERS DRAWINGS FOR ADDITIONAL DETAILS AND DIMENSIONS.
2.) SIGN CABINET AND CONNECTION BY DANIELS WHOLESALE.

* NOTE: THIS FOOTING HAS BEEN DESIGNED ON THE ASSUMPTION THAT THE SOIL IS SUITABLE FOR BEARING AND IS NON-EXPANSIVE. OWNER TO VERIFY SOIL CONDITIONS PRIOR TO CONSTRUCTION.

* CLIENT - DANIELS WHOLESALE
* 2012 IBC
* 140 MPH WIND SPEED, EXP. C
* (1) POLE, (1) FOOTING

MBI
michael brady inc.
sign engineering
structural engineering

KNOXVILLE OFFICE
299 WEISGARBER RD.
KNOXVILLE, TENNESSEE
37919
PHONE 865-584-0999
FAX 865-584-5213

PROJECT:
1002 Washington St. Houston TX

DRAWING TITLE:
Single Post Canopy

DRAWN BY: JAM
CHECKED BY: DSA
COMM. NO. 170235.01
FIRM #-15323

DATE:	03/06/17	
REV. #	DATE	DRAWN BY

DRAWING NO.
DWG.
2

